

# DESCRIPTION OF VESSEL AND EQUIPMENT:

**Registration:**  
Norwegian.

**Classification:**  
Det Norske Veritas class ✕ 1A1 and requirements of the Norwegian Maritime Directorate for Norwegian registration and unrestricted trade.

**Dimensions:**  
Length overall . . . . . 78.50 metres (257' 6 1/2")  
Breadth moulded . . . . . 26.00 metres (85' 4")  
Draft Operational . . . . . 4.25 metres (13' 11")  
Max. draft with  
azimuthing thrusters  
in position . . . . . 5.77 metres (18' 11")

**Tonnages:**  
Gross . . . . . 3977 reg. tons  
Net . . . . . 1193 reg. tons

**Technical Specifications:**  
Propulsion units - 2 x 735 kW (2 x 1,000 BHP)  
Schottel azimuthing type thrusters, driven  
by DC electric motors.  
Transverse thrusters - 2 x 368 kW (2 x 500 BHP)  
with controllable pitch propellers, electrically  
powered by AC motors.  
Electric alternators - 3 x 1070 kW, each driven  
by a Bergen Diesel engine.

**Capacities:**  
Marine diesel oil . . . . . 550 m<sup>3</sup>  
Fresh water . . . . . 210 m<sup>3</sup>

**Lifting Characteristics:**  
**Main Hooks:**  
Max. lifting capacity . . . . . 2x300 tonnes  
at max. lifting height . . . . . 60 metres  
corresponding outreach . . . . . 17.5 metres  
Auxiliary lift . . . . . 12/24 tonnes

**Jib Hooks:**  
Max. lifting capacity . . . . . 2x150 tonnes  
at max. lifting height . . . . . 78 metres  
corresponding outreach . . . . . 22.5 metres

**High Lift Boom:**  
Capacity of 200 tonnes to 156 m height,  
and 100 tonnes to 165 m height.

Provision made for salvage tackles with lifting  
capacity 2 x 300 tonnes in addition to main  
hooks.

**Winches & Deck Machinery:**  
6 crane winches, electric AC drive.  
4 mooring/aux. hoisting winches, 12 tonnes,  
electric AC drive. 2 mooring winch/windlasses,  
12 tonnes, electric AC drive. 1 aux./hydraulic  
crane, covering the main deck with a linked  
telescopic boom. Capacity: 20 metertones.

**Anchoring Systems:**  
2 ship anchors, each 2,160 kgs on 220 m,  
40 mm<sup>ø</sup> chain.  
4 positioning high holding power anchors, each  
3,000 kgs on 1,200 m, 40 mm<sup>ø</sup> wire rope.  
Maximum pulling power 29 tonnes.

**Instrumentation & Electronic Equipment:**  
Monitoring and safety equipment for crane  
operations according to Norwegian regulations.  
Semi-automatic positioning system with single  
lever control (Ulstein FCM system).  
Navigating equipment includes radar, gyro  
compass//automatic pilot, echo sounder,  
Decca navigator etc.

**Radio Equipment:**  
Radio telephony station according to  
regulations, VHF systems for external and  
internal communication.

**Accommodation:**  
Accommodation for a total of 29 persons in 17  
single and 6 double cabins. All accommodation  
spaces are fully air conditioned.

**Ballast System:**  
Remotely operated, with pump capacity:  
2 x 500 m<sup>3</sup>/h.

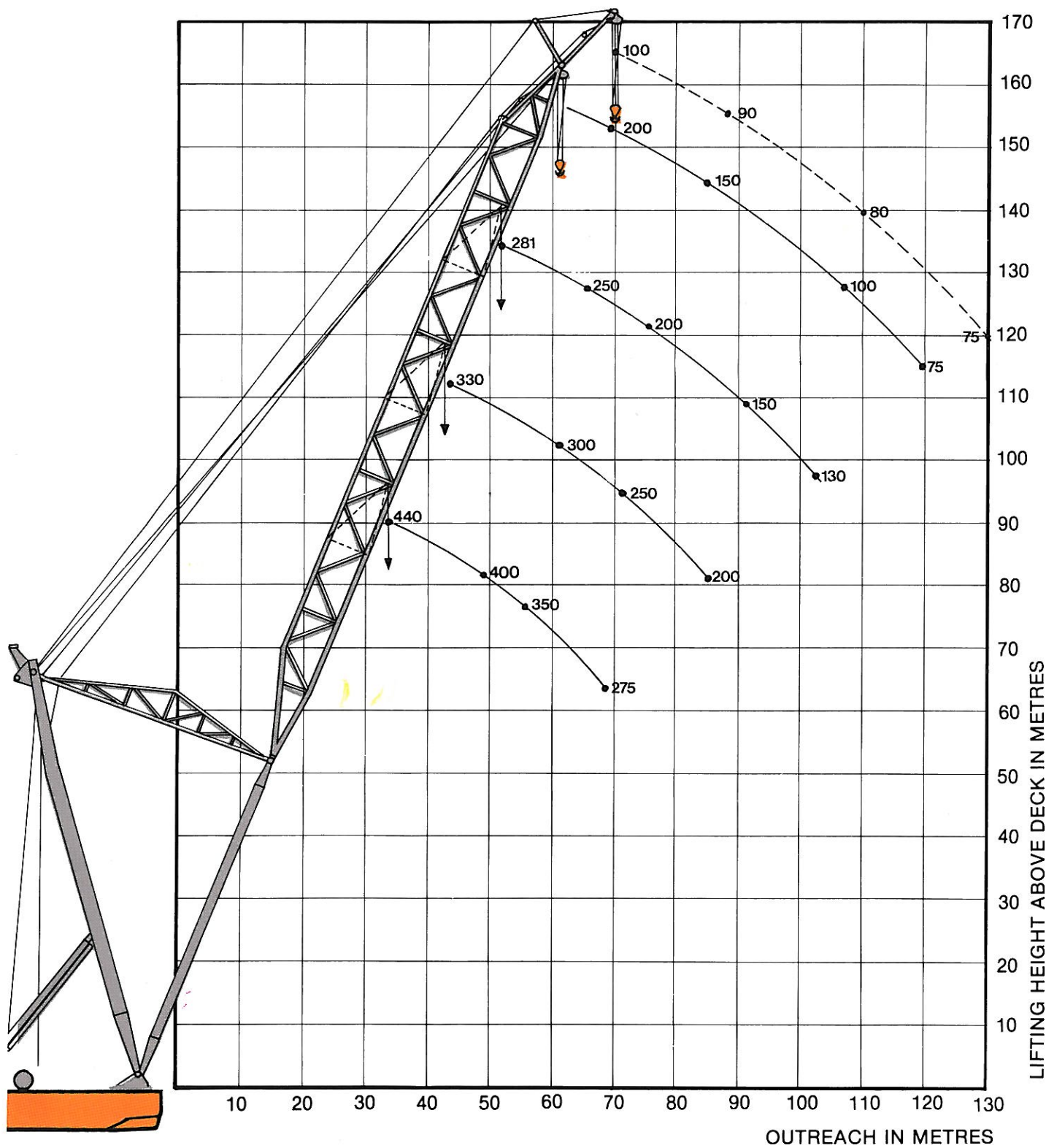
**Power Supplies:**  
The following may be delivered:  
Electric power: 440 V, 60 Hz  
Compressed Air: 7.0 bar (100 P.S.I.)



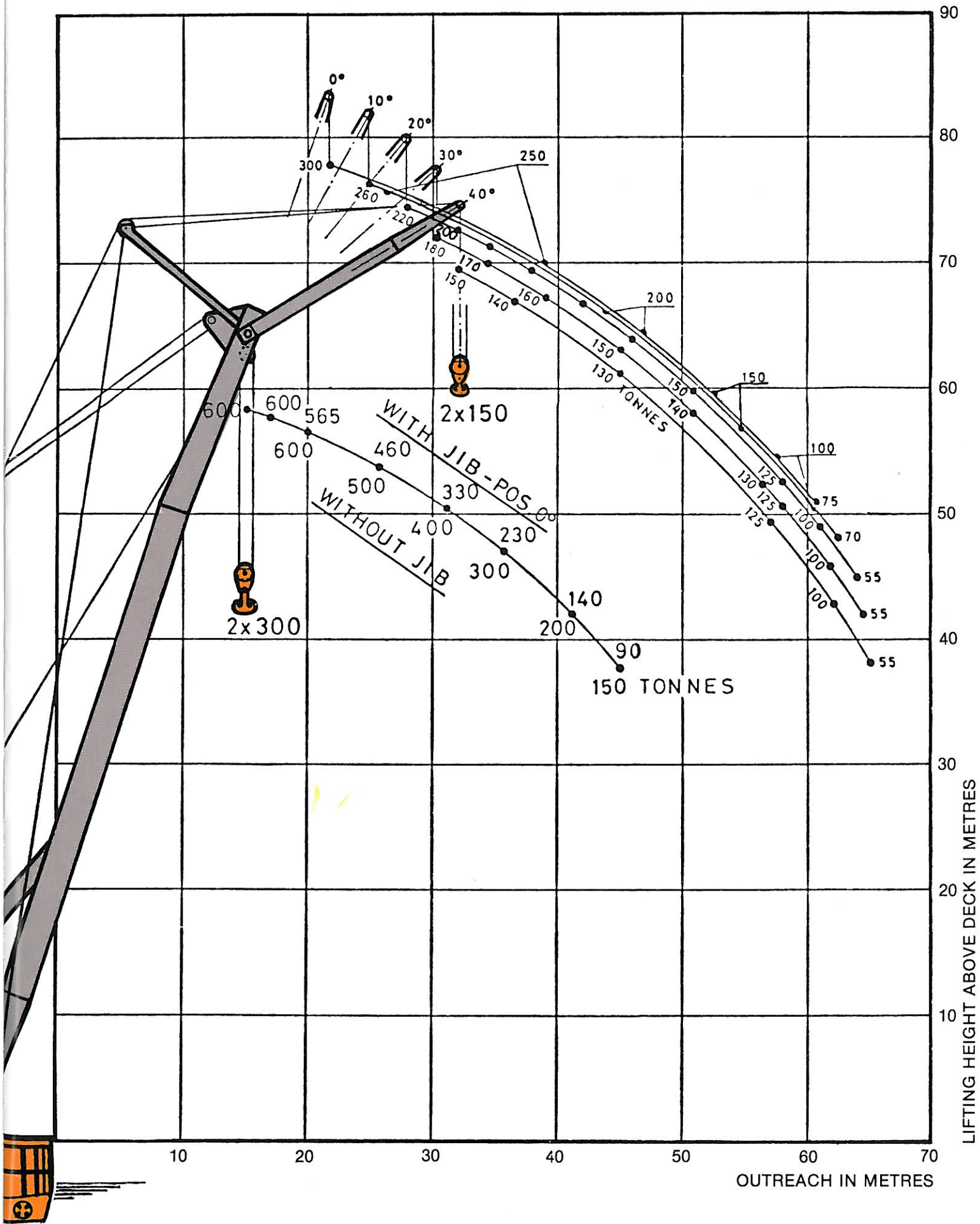
«UGLEN» with rig in transit position. At normal draft  
highest point will be 33 m above sea level with jib  
mounted and 28 m with jib dismantled.

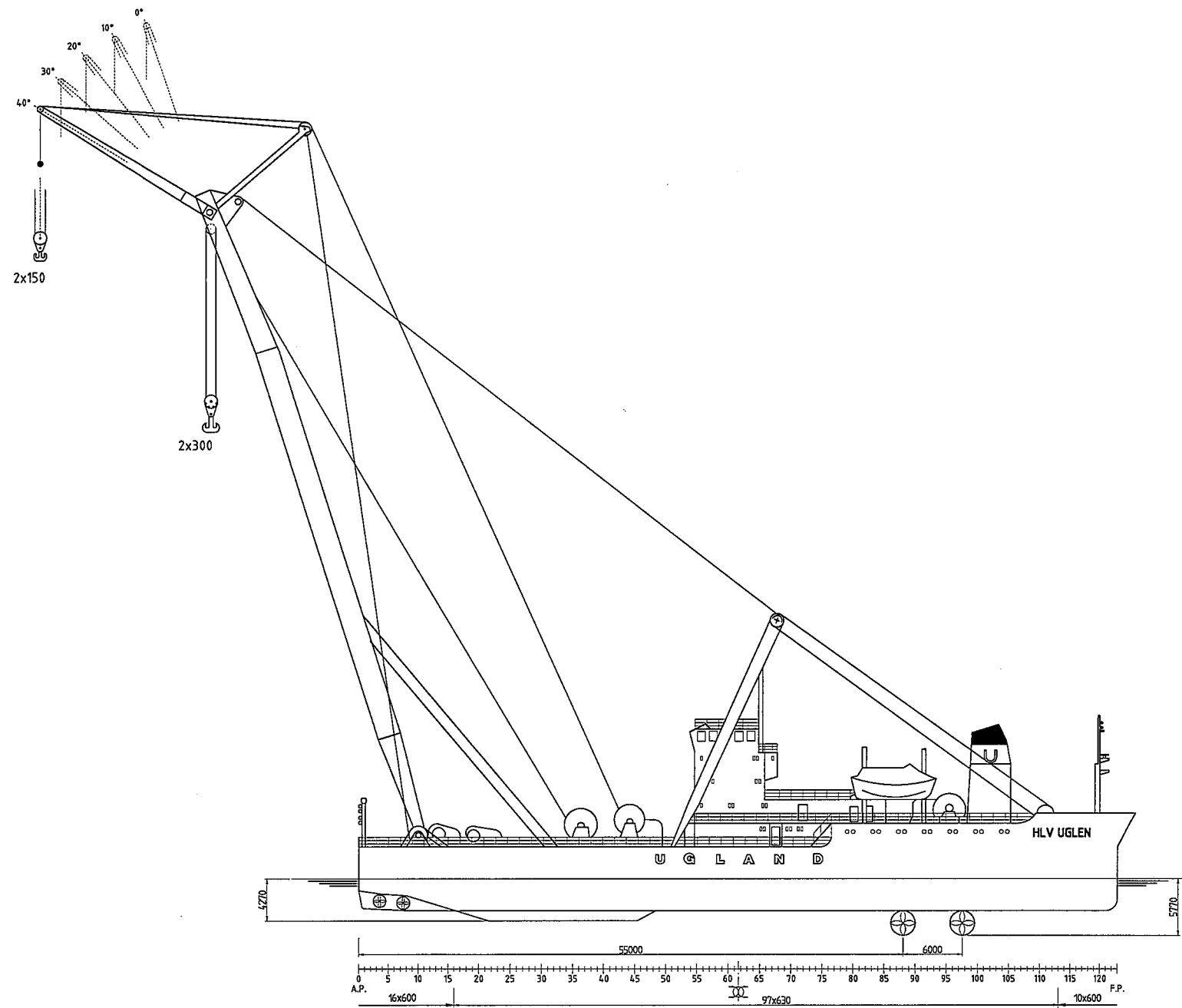
# LIFTING CHARACTERISTICS

## HIGH LIFT BOOM AND FLYJIB

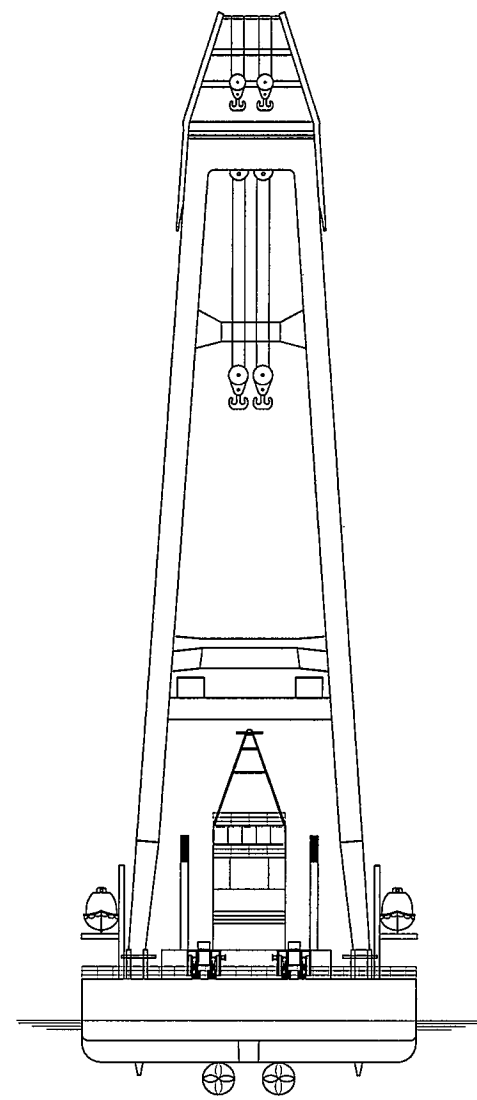


# MAIN BOOM AND JIB

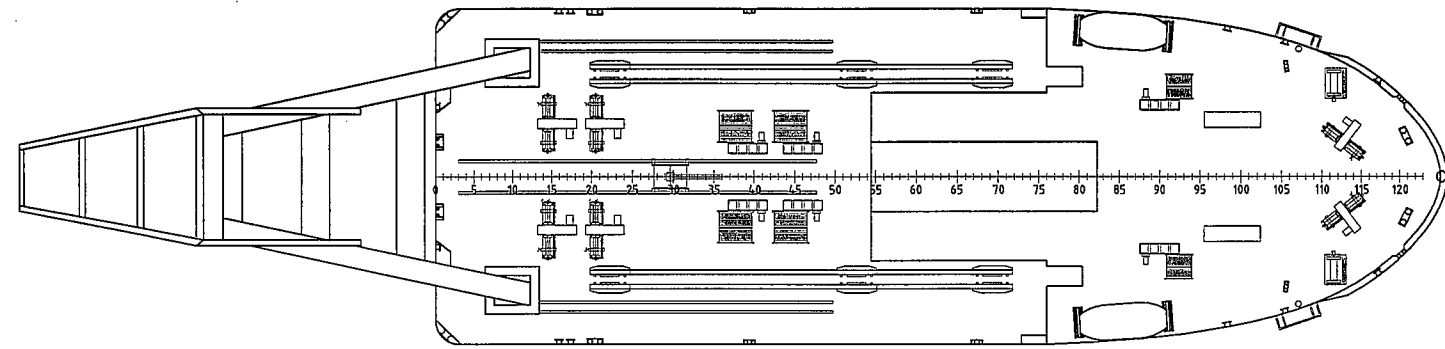




ELEVATION



AFT VIEW  
LOOKING FORWARD



PLAN VIEW

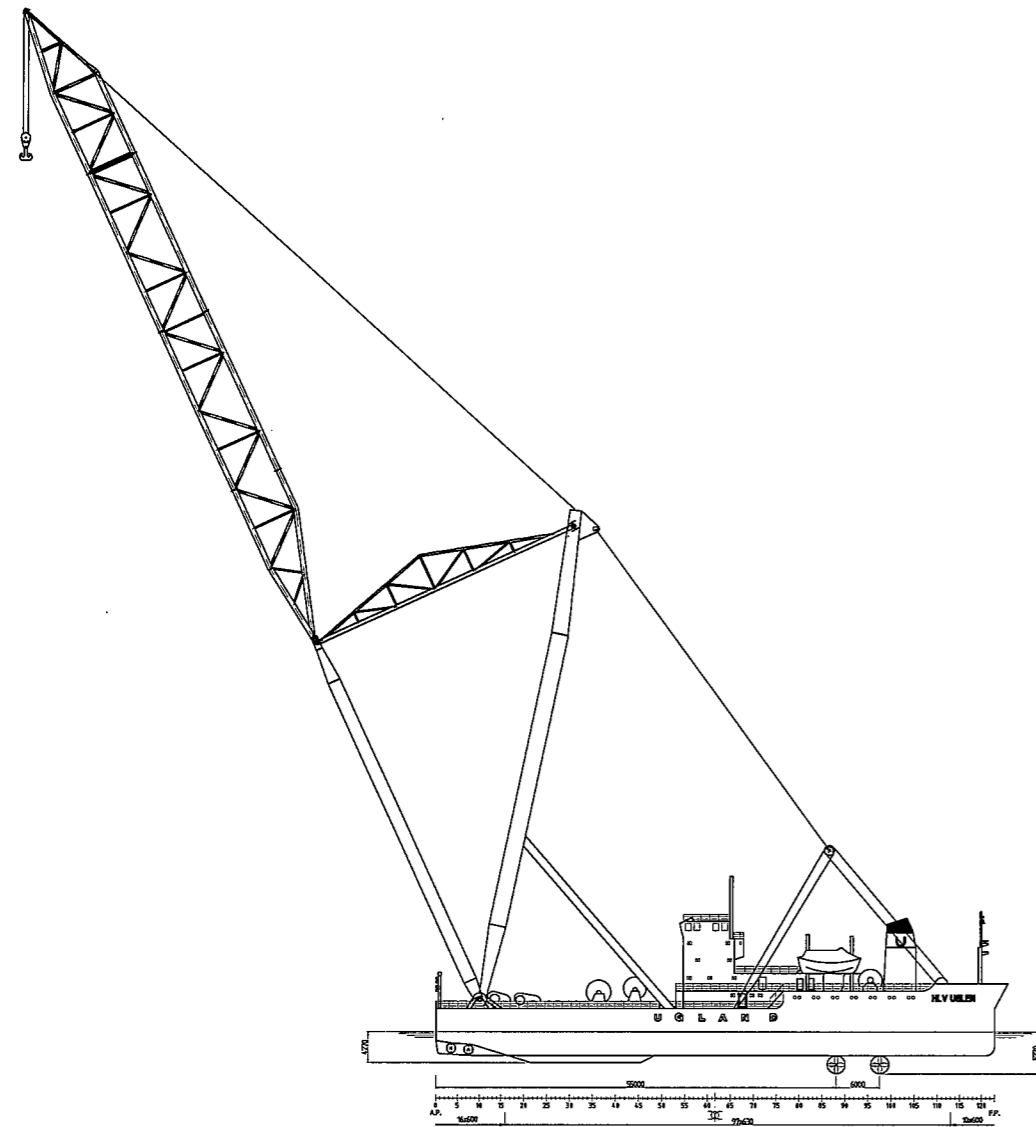
**HLV UGLEN - DIMENSIONS:**

LENGTH OVERALL:	78.5 m
BREADTH MOULDED:	26.0 m
DRAFT MOULDED:	3.27 m
MAX. DRAFT TO KEELS:	4.27 m
MAX. DRAFT (WITH THRUSTERS):	5.77 m

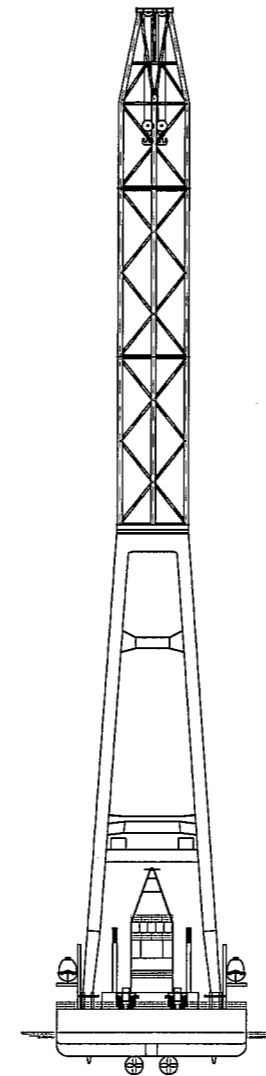
2	ISSUED FOR APPROVAL	31.05.05	AT	MS	KMK	KMK
1	ISSUED FOR COMMENTS	26.05.05	OCL	MS	KMK	KMK
REV.	REASON FOR ISSUE	DATE	BY	CHECKED	ENG. CHECK	APPR. CLIENT
GLOBAL MARITIME A/S		CLIENT: UGLAND CONSTRUCTION AS				
PARTNERSHIP AND ENGINEERING CONSULTANTS		PROJ. NO: 800-053				
TITLE: HL V UGLEN ARRANGEMENT STANDARD LIFTING BOOM						
AUTOCAD FILE	ORIGINAL SIZE	SCALE	DRAWING NO.	REVISION		
800053N100001_2.dwg	A0	1:200 UNO.	800-053-N-100-001	2		

**HLV UGLEN - DIMENSIONS:**

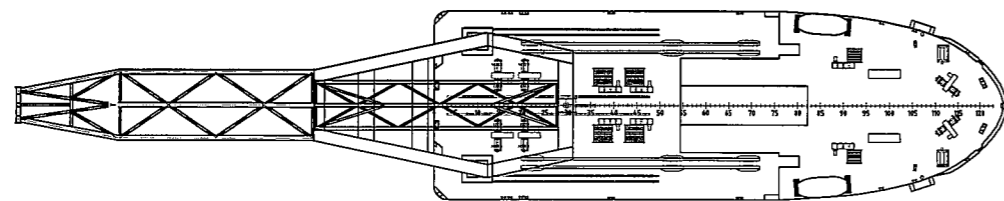
LENGTH OVERALL:	78.5 m
BREADTH MOULDED:	26.0 m
DRAFT MOULDED:	3.27 m
MAX. DRAFT TO KEELS:	4.27 m
MAX. DRAFT (WITH THRUSTERS):	5.77 m



**ELEVATION**





**AFT VIEW  
LOOKING FORWARD**



**PLAN VIEW**

REV.	REASON FOR ISSUE	DATE	BY	CHECKED	ENG. CHECK	APPR.	CLIENT
2	ISSUED FOR APPROVAL	14.11.05	AT	IK	IK	IK	IK
1	ISSUED FOR COMMENTS	10.11.05	AT	IK	IK	IK	IK


**GLOBAL MARITIME A/S**  
 MARINE, OFFSHORE AND ENGINEERING CONSULTANTS  
 FABRIKVEIEN 5, P.O. BOX 342, 4667 STAVANGER, NORWAY

CLIENT: 
**UGLAND CONSTRUCTION AS**  
 PROJ NO 800-053

TITLE

**HLV UGLEN  
ARRANGEMENT  
150 M HIGH LIFT BOOM**

AUTOCAD FILE	ORIGINAL SIZE	SCALE	DRAWING NO.	REVISION
800053N100002-2.dwg	A1	1:500 U.N.O.	800-053-N-100-002	2